



**ALL TRIUMPH
DRIVE-IN 2010
REGALIA ORDER
FORM**

**TRIUMPH AT THE
FORT**

INSTRUCTIONS:

1. Print form
2. Fill in item, quantity, size, amount(s)
3. Add total to page 1 (registration form)
4. Attach payment to forms
5. Mail to address on registration form (page 1)

	Price	Qty	Colour	Size	Amount
Gildan 3700 Block Pique Sport shirt	25.00	_____	_____	_____	_____
Gildan 3101 Jaquard birds eye collar sport shirt	25.00	_____	_____	_____	_____
Bella Ladies' V-Neck T. 1005	20.00	_____	_____	_____	_____
Bella Ladies' Scoop Neck T. 1003	20.00	_____	_____	_____	_____
Hanes United We Drive silkscreened T-shirt	15.00	_____	_____	_____	_____
Coal Harbour® Short Sleeve Denim Shirt. D500	25.00	_____	_____	_____	_____
Coal Harbour® Long Sleeve Denim Shirt. D600	30.00	_____	_____	_____	_____
NEW ERA® Structured Stretch Cotton Cap	20.00	_____	_____	_____	_____
THE AUTHENTIC T-SHIRT COMPANY® Enzyme Washed Sandwich Bill Cap. C120	15.00	_____	_____	_____	_____
United We Drive pin	3.00	_____	_____	_____	_____



TOTAL COST:

ADD Total Regalia amount to page 1 (Registration form) Prices quoted are in Canadian funds.

=====

\$25.00 CAD



Yellow/Navy



White/Red

GILDAN

3700

Gildan® Ultra Cotton™ Wide Stripe Colour Block Pique Sport Shirt.

- Embroidered ATDI 2010 logo
- 12-oz, 100% cotton pique
- Wide striped collar and cuffs
- Clean finished placket with reinforced bottom box
- Three wood tone buttons
- Welt cuffs that keep their shape
- Lay-flat contoured collar
- Double-needle bottom hem for increased durability
- 2009 Catalogue Page 33

sizes S-2XL

\$25.00 CAD



Cardinal/Sand



Sport Grey/Navy



Black/Sand



Navy/White

GILDAN

3101

Gildan® Ultra Cotton™ Jacquard Birdseye Collar Pique Sport Shirt.

- Embroidered ATDI 2010 logo
- 12-oz 100% cotton pique
- Birdseye collar and cuffs
- Clean finished placket with reinforced bottom box
- Three wood tone buttons
- Welt cuffs that keep their shape
- Lay-flat contoured collar
- Double-needle bottom hem for increased durability
- 2009 Catalogue Page 33

sizes S-2XL

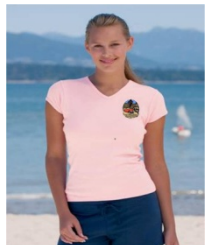
\$20.00 CAD



Baby blue



Black



Pink



Red

bella

1005

Bella Ladies' V-Neck T. 1005

- Embroidered ATDI 2010 logo
- 9.7-oz, 100% combed ring spun cotton
- Super soft 1x1 baby rib knit
- Side seamed
- Custom contoured fit
- 2009 Catalogue Page 53

Ladies sizes S-2XL

\$20.00 CAD



Baby Blue



Red



Chocolate



Bkack

bella 1003

Bella Ladies' Scoop Neck T. 1003

- Embroidered ATDI 2010 logo
- 9.7-oz, 100% combed ring spun cotton
- Super soft 1x1 baby rib knit
- Side seamed
- Custom contoured fit

Ladies sizes S-2XL

\$15.00 CAD



Deep Royal



White



Light Steel



Red

Hanes Tagless® T. 5250

- Silkscreened -United We Drive logo
- 10.2-oz, 100% ComfortSoft® cotton
- Tagless for ultimate neck comfort
- Double-needle coverseamed neck
- Shoulder-to-shoulder tape
- Pre-shrunk

sizes S-3XL



Demin Blue

\$25.00 CAD



Coal Harbour® D500

Coal Harbour® Short Sleeve Denim Shirt. D500

- Embroidered ATDI 2010 logo
- durable and comfortable cotton
- Pre-washed for unbeatable softness
- 10.9-oz, 100% cotton
- Button down collar
- Double yoke
- Left chest pocket
- Hemmed sleeves
- "Coal Harbour®" engraved, horn tone buttons
- Reinforced topstitching throughout

Adult sizes XS-4XL

\$30.00 CAD

Coal Harbour®

D600



Coal Harbour® Long Sleeve Denim Shirt. D600

- Embroidered ATDI 2010 logo
 - durable and comfortable cotton
 - Pre-washed for unbeatable softness
 - 10.9-oz, 100% cotton
 - Button down collar
 - Double yoke
 - Left chest pocket
 - Button through sleeve placket with double pleated, adjustable cuffs
 - "Coal Harbour®" engraved, horn tone buttons
 - Reinforced topstitching throughout
- Adult sizes XS-4XL**

\$20.00 CAD



Dark Green



Royal



Black



Scarlet



N100

NEW ERA® Structured Stretch Cotton Cap

- Embroidered ATDI 2010 logo
 - 97/3 Cotton/Spandex
 - Structured
 - Mid Profile
 - 6-Panel
 - Stretch fit with elasticized band
 - NEW ERA® taping on inside seams
- Sizes: S/M (6-7/8 to 7-1/4) & L/XL (7-3/8 to 7-3/4)**

\$15.00 CAD



Khaki/Black



Hunter/Khaki



Red/Navy



Black/White

THE
AUTHENTIC
T-SHIRT COMPANY®

C120

**THE AUTHENTIC T-SHIRT COMPANY®
Enzyme Washed Sandwich Bill Cap. C120**

- Embroidered ATDI 2010 logo
- 100% cotton
- Low profile
- Unstructured, 6-panel construction
- Self fabric sweatband and pre-curved bill
- Overlapping Velcro closure
- Tonal stitched eyelets